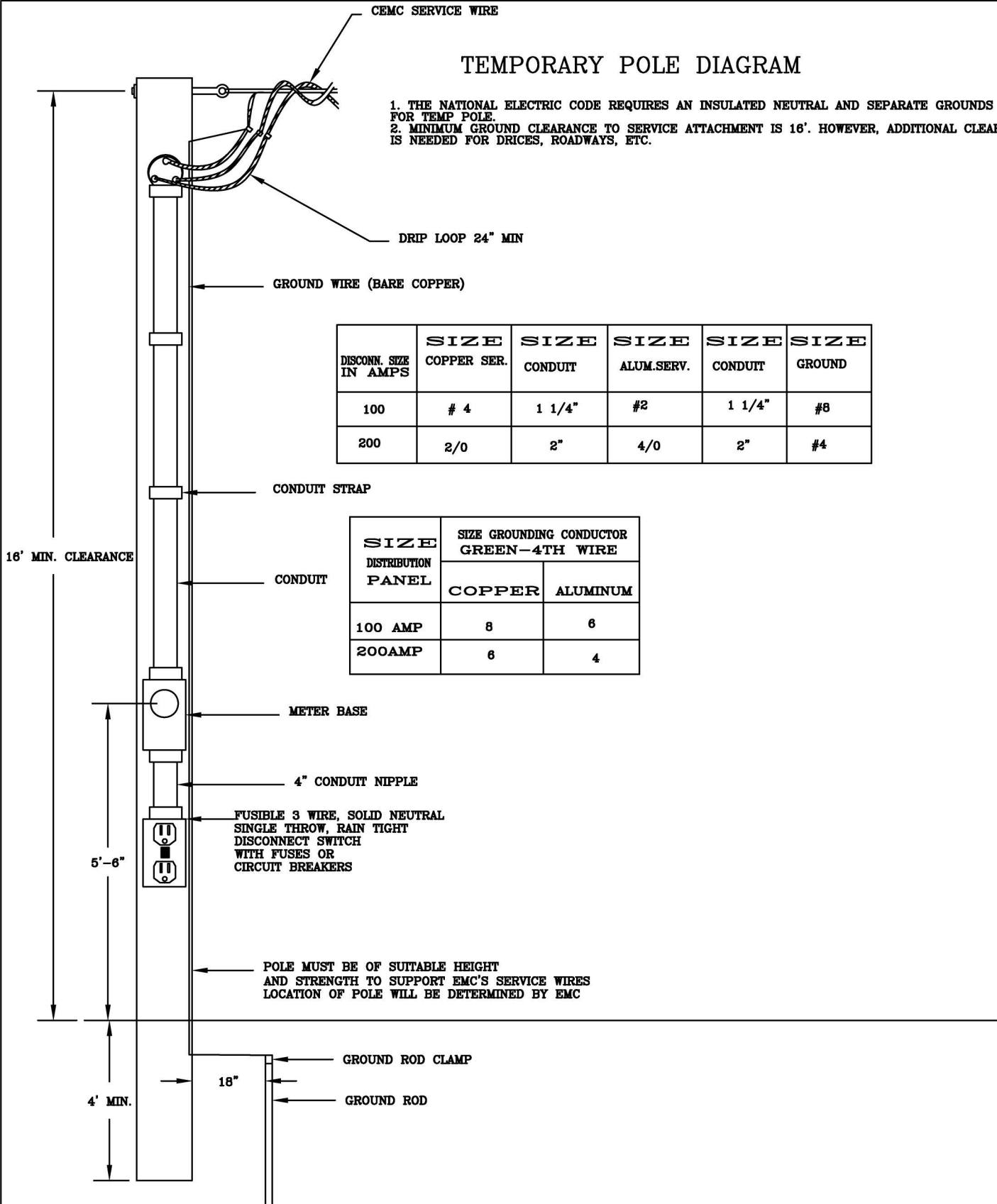


TEMPORARY POLE DIAGRAM

1. THE NATIONAL ELECTRIC CODE REQUIRES AN INSULATED NEUTRAL AND SEPARATE GROUNDS FOR TEMP POLE.
2. MINIMUM GROUND CLEARANCE TO SERVICE ATTACHMENT IS 16'. HOWEVER, ADDITIONAL CLEARANCE IS NEEDED FOR DRICES, ROADWAYS, ETC.



DISCONN. SIZE IN AMPS	SIZE COPPER SER.	SIZE CONDUIT	SIZE ALUM.SERV.	SIZE CONDUIT	SIZE GROUND
100	# 4	1 1/4"	#2	1 1/4"	#8
200	2/0	2"	4/0	2"	#4

SIZE DISTRIBUTION PANEL	SIZE GROUNDING CONDUCTOR GREEN-4TH WIRE	
	COPPER	ALUMINUM
100 AMP	8	6
200AMP	6	4

DRAWN BY: C.J. HOWARD
DATE



REVISIONS
